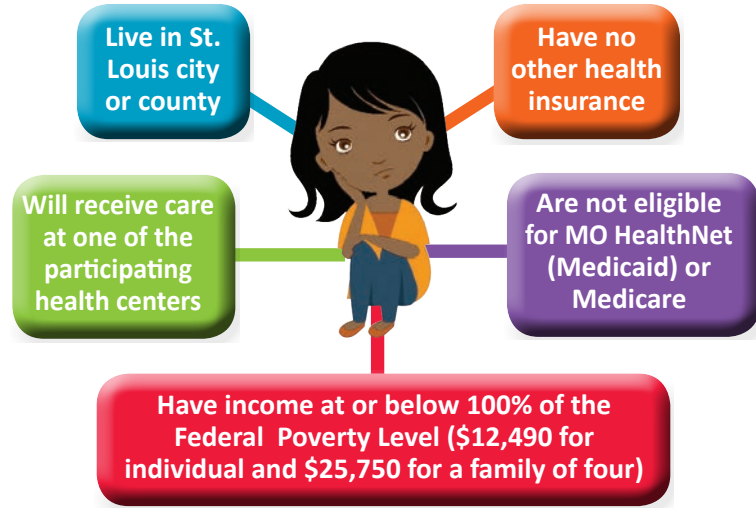




What is Gateway to Better Health?

Gateway to Better Health is a healthcare program for adults who are uninsured. The program covers some preventive, primary, specialty and urgent care services. Gateway to Better Health is available to 19-64 year old adults who:



What are the benefits to joining?

Gateway to Health members have:

- No monthly premiums.
- Co-pays from \$0.50 to \$3.00 per visit.
- Generic prescription drugs and brand name insulin and inhalers for \$2.00 or less.
- A medical home. (This is the place you go for regular health care. This lets your doctor get to know you and your health care needs.)
- Non-emergency transportation to and from Gateway covered appointments.
- Urgent care-5 visits per year at a Gateway provider.

What to expect when you apply?

To apply for Gateway to Better Health, you may need to provide some documents. These may include:

- Proof of residency. Something that shows you live in St. Louis City or County.
- Proof of citizenship or visa status. To show you are a legal citizen of the United States or in the United States legally.

- Proof of income for the last 30 days.
- If You Are Eligible for Gateway to Better Health**, you will get an approval letter, member ID card and handbook about benefits.
- If You Are Not Eligible for Gateway to Better Health**, visit your local health center and learn about other coverage options that may be available.

If you need more information on applying, please call our call center at 1.888.513.1417 Monday through Friday 8:00 a.m. to 5:00 p.m.

Space is Limited! Apply today!

Gateway to Better Health is a temporary program sponsored by the Missouri Department of Social Services in partnership with the St. Louis Regional Health Commission.

Where can I apply?

For location addresses and phone numbers, turn the page.



**BETTY JEAN KERR
PEOPLE'S HEALTH CENTERS**

www.phcenters.org
Ph: 314.367.7848

- 1 Betty Jean Kerr People's Health Center
5701 Delmar Boulevard, St. Louis, MO 63112
- 2 Betty Jean Kerr People's Health Center - North Site
11642 W. Florissant Avenue, Florissant, MO 63033
- 3 Betty Jean Kerr People's Health Center - Ferguson Site
Site 49 N Florissant Road, Suite 101
Ferguson, MO 63135



**FAMILY CARE
HEALTH CENTERS**

www.familycarehealthcenters.org

- 4 Family Care Health Centers - Carondelet
401 Holly Hills Ave, St. Louis, MO 63111 / Phone: 314.353.5190
- 5 Family Care Health Centers - Forest Park Southeast
4352 Manchester Ave, St. Louis, MO 63110 / Ph: 314.531.5444



AFFINIA HEALTHCARE

www.affiniahealthcare.org
Ph: 314.814.8700

- 6 Affinia Healthcare, 1717 Biddle St, St. Louis, MO 63106
- 7 Affinia Healthcare, 2220 Lemp Ave, St. Louis, MO 63104
- 8 Affinia Healthcare, 3930 South Broadway, St. Louis, MO 63118
- 9 Affinia Healthcare, 4414 North Florissant Ave St. Louis, MO 63107
- 10 Affinia Healthcare, 6763 Page Ave St. Louis, MO 63133



CARESTL HEALTH

www.carestlhealth.org

- 11 CareSTL Health @ Martin Luther King
5471 Dr. Martin Luther King Dr, St. Louis, MO 63112 / Ph: 314.367.5820
- 12 CareSTL Health @ Whittier
2425 N Whitter, St. Louis, MO 63113 / Ph: 314.371.3100
- 13 CareSTL Health @ Riverview
5541 Riverview Blvd, St. Louis, MO 63120 / Ph: 314.389.4566
- 14 CareSTL Health @ Pope
4500 Pope, St. Louis, MO 63115 / Ph: 314.385.3990



**ST. LOUIS COUNTY
DEPARTMENT OF HEALTH**

www.stlouisco.com/HealthandWellness

- 15 South County Health Center, 4580 S. Lindbergh Blvd,
Sunset Hills, MO 63127 / Ph: 314.615.0400
- 16 North Central Health Center, 4000 Jennings Station Rd,
Pine Lawn, MO 63121 / Ph: 314.615.9700
- 17 John C. Murphy Health Center, 6121 N. Hanley Road
St. Louis, MO 63134 / Ph: 314.615.0500

