



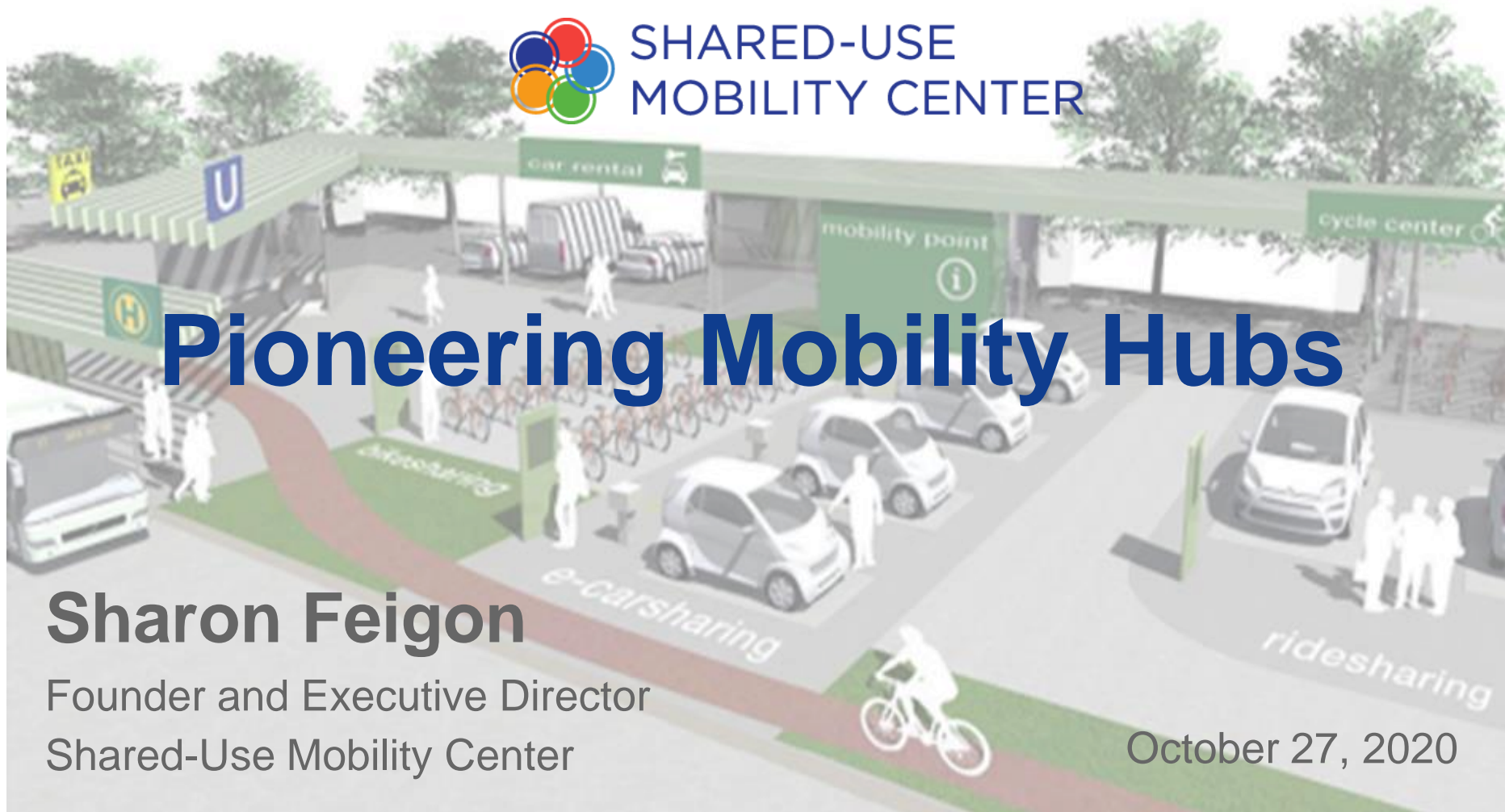
SHARED-USE  
MOBILITY CENTER

# Pioneering Mobility Hubs

**Sharon Feigon**

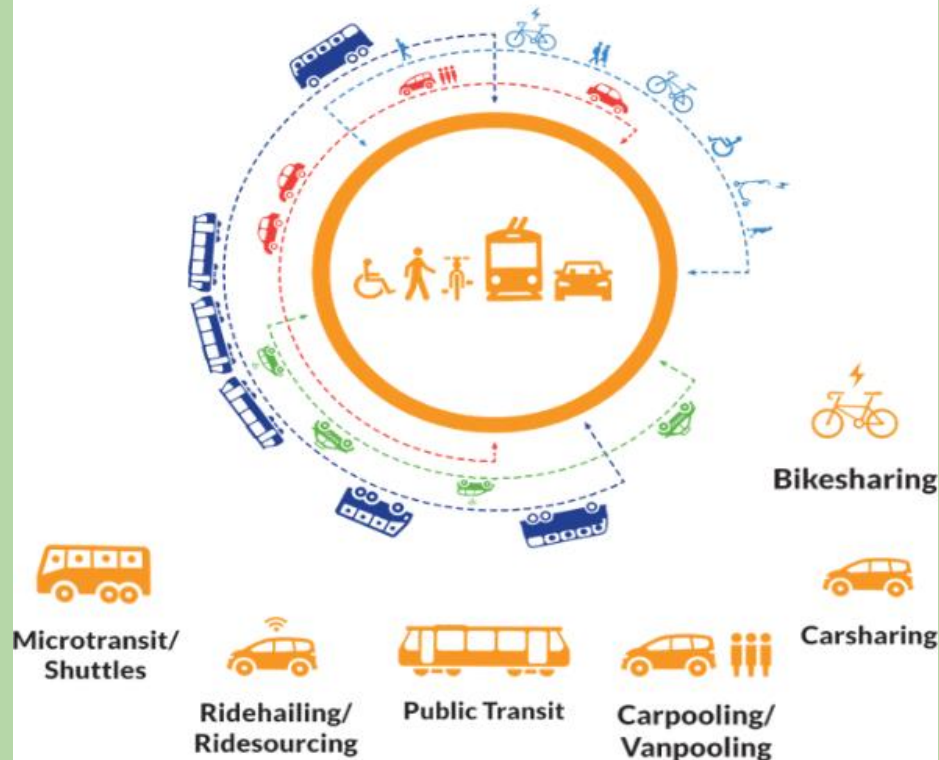
Founder and Executive Director  
Shared-Use Mobility Center

October 27, 2020





## Creating a Multimodal Transportation System that Works for All



# SUMC's Work

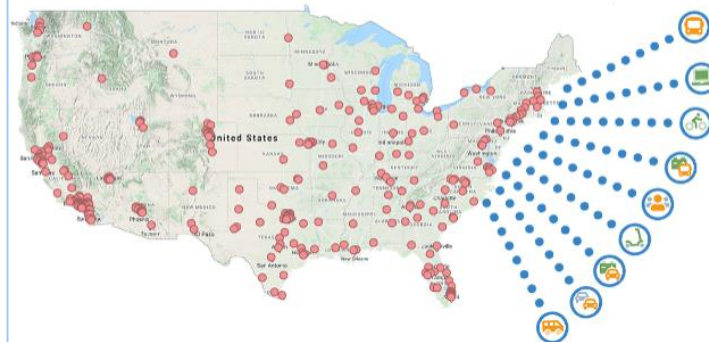


Clean Mobility Options



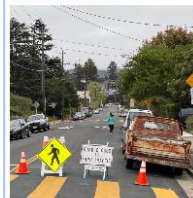
100+ Innovative Mobility Projects

Together, the top 50 U.S. cities could save nearly 100 million tonnes of CO2 emissions every year!



## MOD Learning Center Case Studies

Pop-Up Mobility Paths & Open Streets due to COVID-19 Crisis



National Review of Public Transit Food Delivery Programs



COVID-19 Resource Homepage

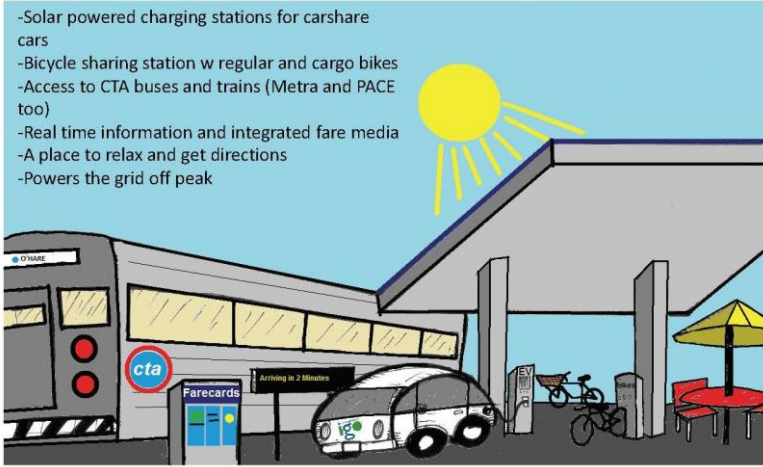


# Pioneers in Mobility Hubs



Chicago Mobility HUB

- Solar powered charging stations for carshare cars
- Bicycle sharing station w regular and cargo bikes
- Access to CTA buses and trains (Metra and PACE too)
- Real time information and integrated fare media
- A place to relax and get directions
- Powers the grid off peak

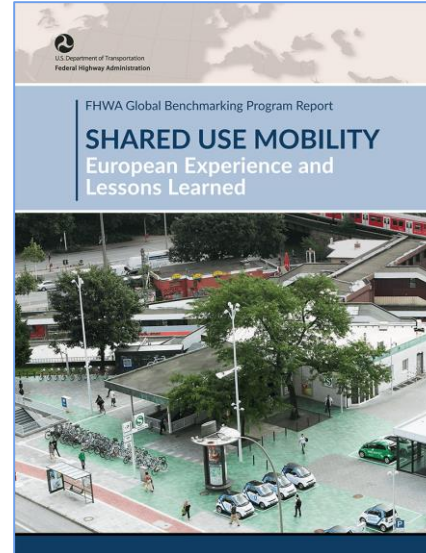


One card, three ways to go





# Education and Research



<https://sharedusemobilitycenter.org/publications/>

# Planning and Funding



SHARED-USE  
MOBILITY CENTER

## SUMC's work on mobility hubs

- Chicago
- Los Angeles
- Seattle
- Minneapolis
- Bay Area
- Indianapolis
- Hawaii



[IndyGo Hub Capital Plan, 2019-2025](#)

### Mobility Hubs Infrastructure

The City of Indianapolis' Indianapolis Plan, the city's transportation integration plan, called for the City and Indigo to work collaboratively to advance the development of mobility hubs, defined within that plan as:

"Facilities to make transportation connections seamless. Mobility hubs can include transit connections, high-quality pedestrian and bicycle access, safety and comfort amenities such as lighting, weather protection, and restrooms; mapping and trip planning information; ride-hailing pick-up and drop-off zones; dedicated car and bike share parking; bicycle storage; real-time transit information; passenger loads and line waiting; electrical vehicle charging; commuter services; and streamlining and public realm activation.

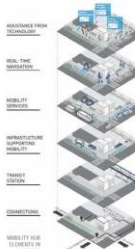
Physically co-locating mobility services in strategic areas—near rapid and/or frequent transit routes, and adjacent to vibrant neighborhood nodes, affordable housing projects, community amenities, and/or social services agencies—and opening access to these services through community partnerships is a strategic role for Indigo. These hubs should help to address IndyGo's role connection challenges, increase ridership, and serve as an impetus for improving access to the mobility ecosystem, of which the transit system serves as the backbone.

In 2018, Indigo was awarded a technical assistance grant from the FHWA through the Shared Use Mobility Center to focus on planning with community-based partners around the deployment of mobility hubs. In advancing these efforts, Indigo has been working collaboratively with the John H. Johnson Neighborhood Center and Engaged Community Development Corporation. This effort will culminate in the production of a Mobility Hubs Accession Plan to be completed later this year. This business plan will guide the development of demonstration mobility hubs, from which Indigo will learn lessons, adapt approaches, and further build these facilities into its future planning and deployment efforts.

This plan calls for the development of two demonstration mobility hubs that will serve to advance the state of practice around mobility hubs, identify lessons learned and best practices, and serve as the basis upon which Indigo grows and adapts this strategy to other locations. The effort is targeted for 2020, with local capital funds programed for this effort.

Table 22: Mobility Hubs

Category	Amount
IndyGo Hub Capital Plan (2019-2025)	\$440,000
FHWA	\$1,100,000
IndyGo	\$1,100,000
Capital Expenditures	\$2,640,000
Operating	\$200,000
Operating	\$200,000



IndyGo,  
2019-2025  
Capital  
Plan



SHARED-USE  
MOBILITY CENTER

***" Mobility Hubs are the physical manifestation  
of the trip planning app PLUS the opportunity  
to create community and a learning  
environment for using new travel options"***

**Sharon Feigon**

1. Adaptive Banners

2. Vehicle Signage

4. Charging Stations

5. Painted Wheel Stops

6. Painted IDG Spaces Stripes

7. IDG Pavement Graphics